

# SOL'S PLANET LSL

SOL'S®  
the fair spirit

UNISEX LONG SLEEVE POLO SHIRT

04241



## PIQUÉ 170

Ribbed collar with neck tape

Reinforced placket with 2 tone-on-tone buttons

Long sleeves with 1x1 ribbed cuffs

Cut and sewn

Spare button sewn on inner side seam

### Care



### Composition

100% organic cotton

### Available colours



White



Black



Bottle green



Charcoal melange



French navy



Grey melange

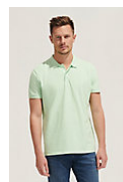
368 Grey melange 85% organic cotton & 15% recycled polyester  
401600

### A committed product

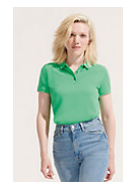


{ AN-APPROVED }  
VEGAN

### Related products



SOL'S PLANET MEN  
03566



SOL'S PLANET WOMEN  
03575

### Available sizes

---



Sizes	S	M	L	XL	XXL	3XL	4XL	5XL
A/B	72/49	74/52	76/55	78/58	80/61	82/65	84/68	87/71

### Packaging

---

Carton size : 60 x 39 x 30 CM

Weight per carton : 11.00 kg



### Customisation

---

- **Embroidery** : This technique is generally used for personalisations that aim for a high-end finish. This technique is the most resistant to washing and use. The embroidery can be applied directly to the product or through embroidered patches. It can be done with thickness effects (with foam) or through patches that will then be affixed to the final product, allowing for variations in materials.
- **Flex** : It is the recommended marking technique for small and medium-sized series. There are several aspects: smooth, velvet, fluorescent, glitter, gold and silver. These are iron-on vinyls that are cut and glued by hot pressing. They are very well suited to a wide range of materials and substrates.
- **Digital** : The printing method that knows no limits: precision, colour effects, number of colours... This technique can be used to mark all types of product quantities and is particularly suitable for cotton-based materials.
- **Digital Printing** : The most widely used technique. It consists, by the stencil method, of depositing the ink directly on the product. There are as many screens and passages as there are colours in the motif to be reproduced and all colours can be achieved. This technique makes it possible to produce very large quantities. It allows the use of inks with various effects for very different renderings and is adapted to almost all textile supports. The marking of coloured substrates requires an opacifying undercoat called « background white ».
- **Transfert** : The right technique for all materials. It is recommended for luggage, heavy garments, difficult to access surfaces. It consists of transferring the marking from a paper support to the garment by hot gluing. The marking by gluing brings rigidity to light supports at the level of the marking zone, nevertheless, the product keeps all its qualities of comfort.