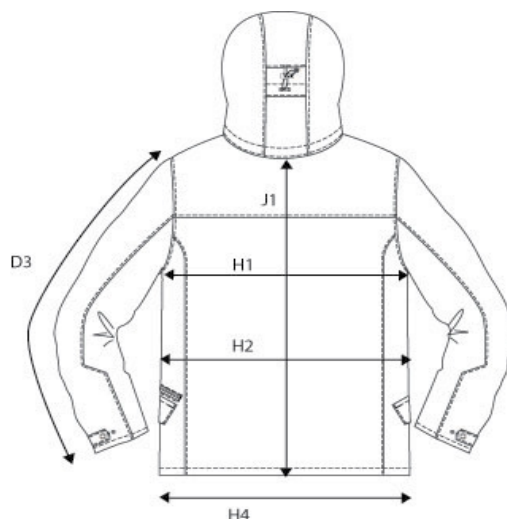
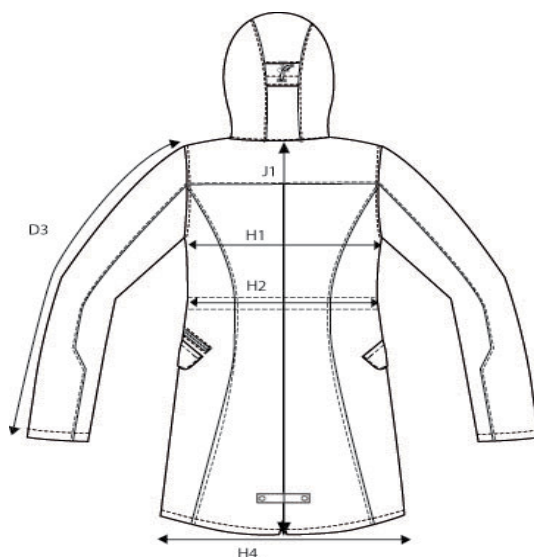


SIZE AND FIT: AVONDALE



AVONDALE Mens

Base size: M / Measurement (in cm)	Diagram	S	M	L	XL	XXL	3XL	4XL
SLEEVE LENGTH from shoulderseam	D3	67	68	69	70	71	72	73
1/2 CHEST WIDTH at armhole	H1	57	60	63	66	69	72	75
1/2 WAIST	H2	56	59	62	65	68	71	74
1/2 BOTTOM WIDTH	H4	54,5	57,5	60,5	63,5	66,5	69,5	72,5
FULL LENGTH at centre back	J1	78	81	84	87	90	93	96



AVONDALE Ladies

Base size: M / Measurement (in cm)	Diagram	XS	S	M	L	XL	XXL	3XL
SLEEVE LENGTH from shoulderseam	D3	61,5	62,75	64	65,25	66,5	67,75	69
1/2 CHEST WIDTH at armhole	H1	51	54	57	60	63	66	70
1/2 WAIST	H2	47	50	53	56	59	62	66
1/2 BOTTOM WIDTH	H4	54	57	60	63	66	69	73
FULL LENGTH at centre back	J1	85	87	89	91	93	95	97