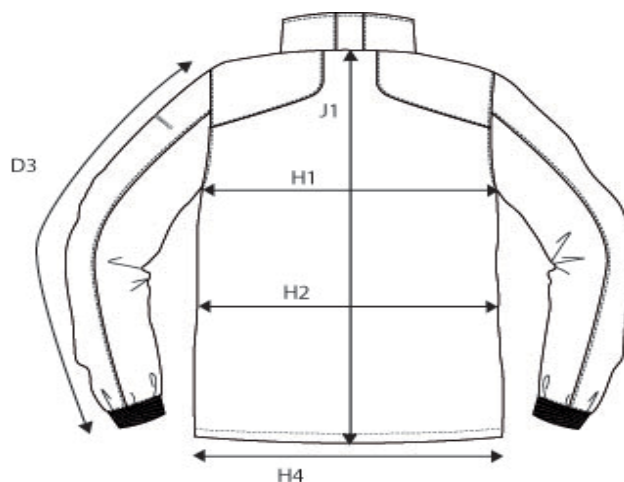


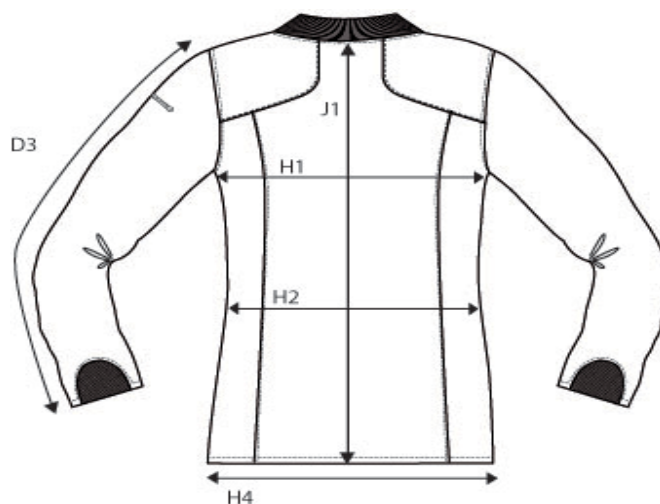
**SIZE AND FIT: MONTEREY**



**MONTEREY MENS**

BASE SIZE: M

Measurement (in cm)	Diagram	S	M	L	XL	XXL	3XL	4XL
SLEEVE LENGTH - from shoulderseam	D3	68,25	70	71,75	73,5	75,25	77	78,75
1/2 CHEST WIDTH at armhole	H1	56,5	59,5	62,5	65,5	68,5	71,5	74,5
1/2 WAIST	H2	54	57	60	63	66	69	72
1/2 BOTTOM WIDTH	H4	52,5	55,5	58,5	61,5	64,5	67,5	70,5
FULL LENGTH at centre back	J1	67	70	73	76	79	82	85



**MONTEREY LADIES**

BASE SIZE: M

Measurement (in cm)	Diagram	XS	S	M	L	XL	XXL
SLEEVE LENGTH - from shoulderseam	D3	62	63	64	65	66	67
1/2 CHEST WIDTH at armhole	H1	44	47	50	53	56	59
1/2 WAIST	H2	42	45	48	51	54	57
1/2 BOTTOM WIDTH	H4	48	51	54	57	60	63
FULL LENGTH at centre back	J1	61,5	63,5	65,5	67,5	69,5	71,5