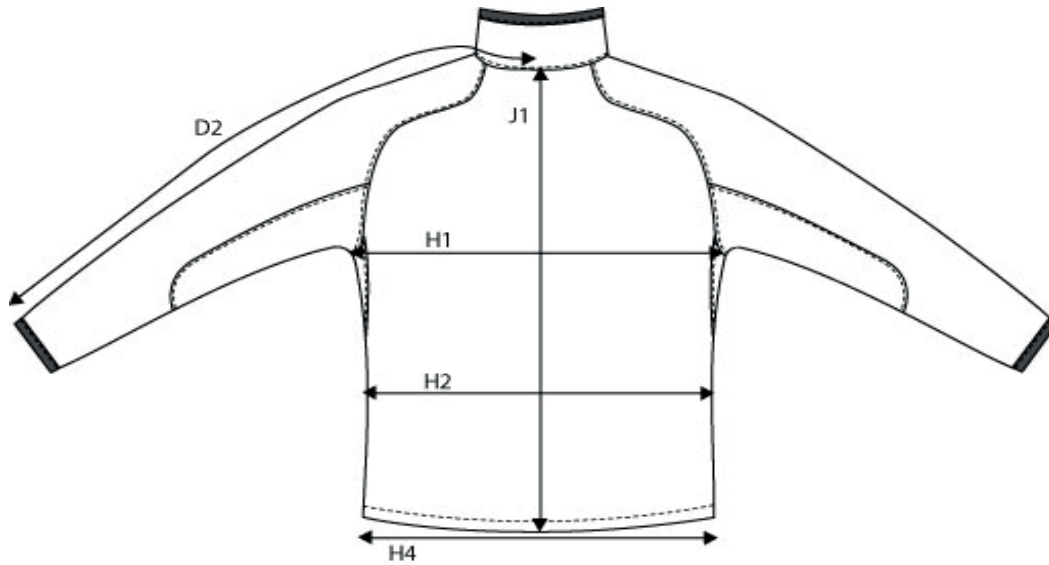
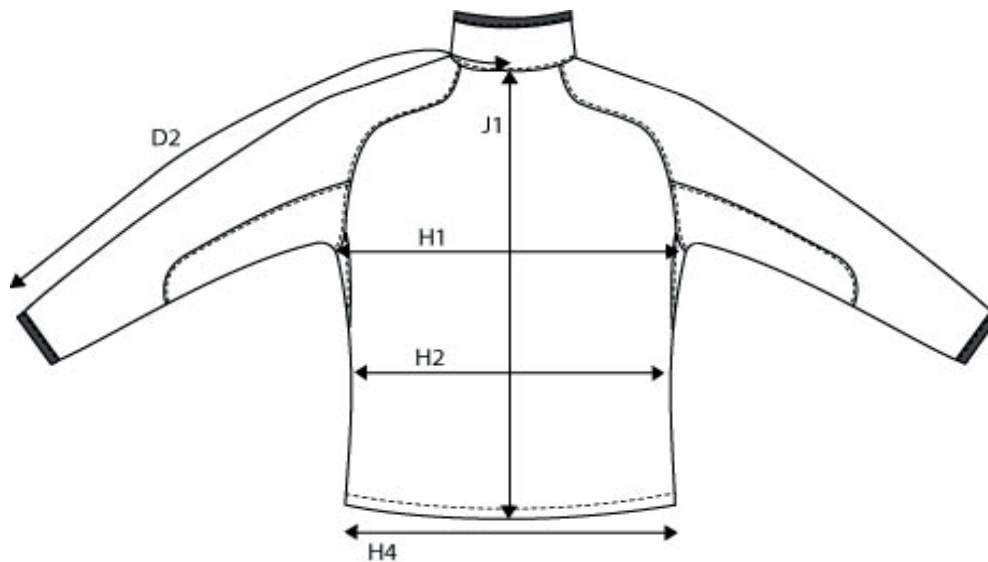


SIZE AND FIT: NANTUCKET



**NANTUCKET MENS**

| Measurement (in cm)          | Diagram | S    | M     | L  | XL    | XXL  | 3XL   | 4XL |
|------------------------------|---------|------|-------|----|-------|------|-------|-----|
| Centre back to end of sleeve | D2      | 92,5 | 93,75 | 95 | 96,25 | 97,5 | 98,75 | 100 |
| Chest Width at armhole       | H1      | 50   | 53    | 56 | 59    | 62   | 65    | 68  |
| Waist Width                  | H2      | 49   | 52    | 55 | 58    | 61   | 64    | 67  |
| Bottom Width                 | H4      | 50   | 53    | 56 | 59    | 62   | 65    | 68  |
| Full Length at centre back   | J1      | 70   | 72    | 74 | 76    | 78   | 80    | 82  |



**NANTUCKETLADIES**

| Measurement (in cm)          | Diagram | XS    | S  | M     | L    | XL    | XXL |
|------------------------------|---------|-------|----|-------|------|-------|-----|
| Centre back to end of sleeve | D2      | 81,75 | 83 | 84,25 | 85,5 | 86,75 | 88  |
| Chest Width at armhole       | H1      | 47    | 49 | 51    | 53   | 55    | 57  |
| Waist Width                  | H2      | 44    | 46 | 48    | 50   | 52    | 54  |
| Bottom Width                 | H4      | 47    | 49 | 51    | 53   | 55    | 57  |
| Full Length at centre back   | J1      | 61    | 63 | 65    | 67   | 69    | 71  |